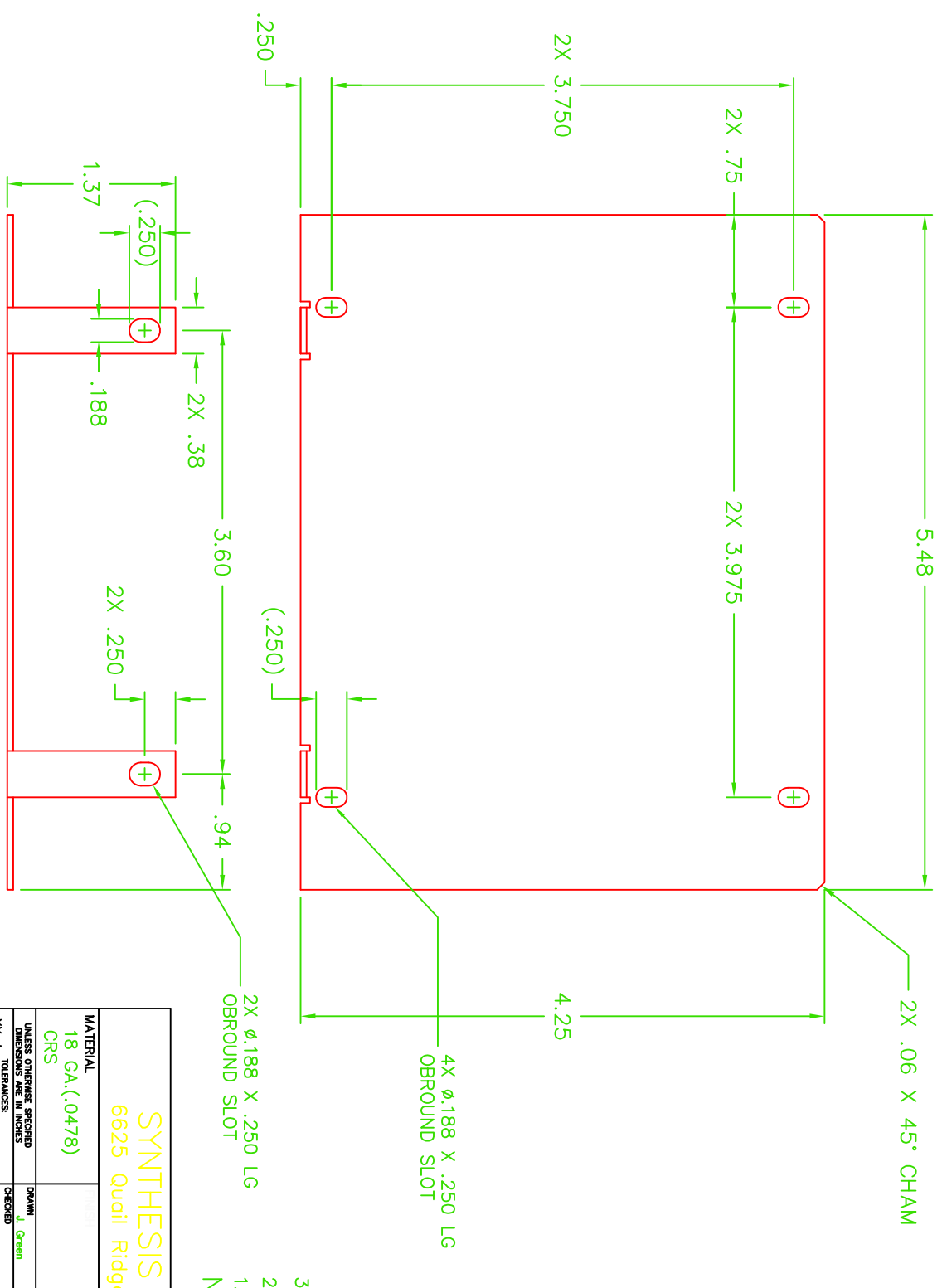


PROPRIETARY DATA



CUSTOMER INFORMATION		REVISIONS			
REV.	PART NUMBER	REV.	DESCRIPTION	DATE	APPROVED
A	MOTM-BR1	A	RELEASED FOR PRODUCTION	3/2/98	

3. POLANE BLACK ALL SURFACES
 2. USE MIN BEND RADI AND BEND RELIEF
 1. REMOVE BURRS AND SHARP EDGES
- NOTES(UNLESS OTHERWISE SPECIFIED):

<p>SYNTHESIS TECHNOLOGY 6625 Quail Ridge Dr. Ft. Worth, TX 76180</p>			
<p>MATERIAL 18 GA.(.0478) CRS</p>		<p>BRACKET</p>	
<p>UNLESS OTHERWISE SPECIFIED DIMENSIONS ARE IN INCHES TOLERANCES: .XX ±</p>		<p>CIS PART NUMBER MOTM-BR1</p>	
<p>SCALE NONE</p>		<p>DRAWING NUMBER BR-1</p>	
<p>DO NOT SCALE DRAWING</p>		<p>SHEET 1 OF 1</p>	
<p>DATE 2/4/98</p>		<p>DATE</p>	
<p>APPROVED</p>		<p>APPROVED</p>	
<p>SIZE B</p>		<p>SIZE B</p>	